

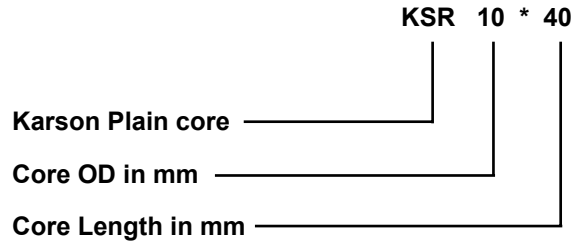
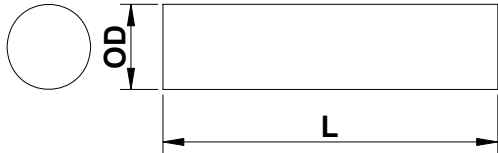


# KARSON ELECTRONICS CO., LTD.

## PLAIN CORE

The diameter is standard, but the length can be changed as per specific requirement.

Typical Part No.



KARSON Part No.	$A_L^*$ nH/N <sup>2</sup>	OD		Length	
		in	mm	in	mm
KSR3.3*12.7	7.0	0.13	3.3	0.50	12.7
KSR6*25	16.0	0.24	6.0	0.98	25.0
KSR6*30	16.0	0.24	6.0	1.18	30.0
KSR8*25	20.0	0.31	8.0	0.98	25.0
KSR8*30	20.0	0.31	8.0	1.18	30.0
KSR10*15	26.5	0.39	10.0	0.59	15.0
KSR10*20	26.5	0.39	10.0	0.79	20.0
KSR10*25	26.5	0.39	10.0	0.98	25.0
KSR10*30	26.5	0.39	10.0	1.18	30.0
KSR10*40	26.5	0.39	10.0	1.57	40.0
KSR15*20	45.0	0.59	15.0	0.79	20.0
KSR15*25	45.0	0.59	15.0	0.98	25.0
KSR15*30	45.0	0.59	15.0	1.18	30.0
KSR19*20	97.0	0.75	19.0	0.79	20.0
KSR19*25	97.0	0.75	19.0	0.98	25.0
KSR19*30	97.0	0.75	19.0	1.18	30.0
KSR19*35	97.0	0.75	19.0	1.38	35.0

Dimensional tolerance(mm): OD: +0.3/-0.3 Length: +0.5/-0.5

\* $A_L$  is approximate and for reference only

ADD: No.27 JinSha Road, ShaYao Village, ShiJie Town, DongGuan City, GuangDong Province, P.R.C.

TEL: +86-769-86638970 FAX: +86-769-86638971

E-mail: Sales@karson.com.tw

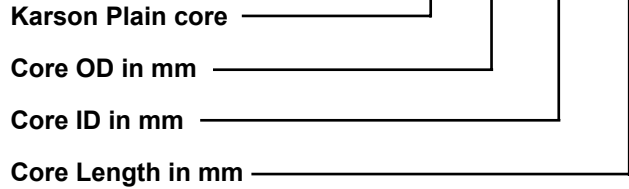
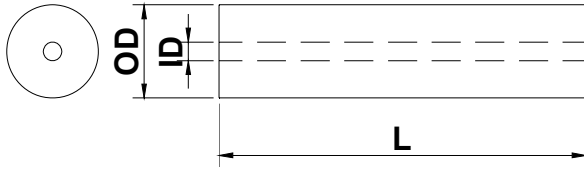


## HOLLOW CORE

The diameter is standard, but the length can be changed as per specific requirement.

Typical Part No.

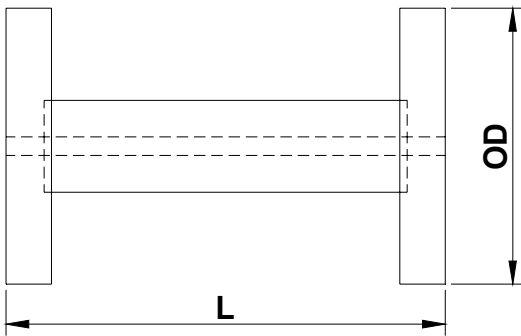
KSR 20 \* 5.3 \* 28



KARSON Part No.	A <sub>L</sub> * nH/N <sup>2</sup>	OD		Length		Length	
		in	mm	in	mm	in	mm
KSR20*5.3*19	280.0	0.79	20.0	0.21	5.3	0.75	19.0
KSR20*5.3*22	320.0	0.79	20.0	0.21	5.3	0.87	22.0
KSR20*5.3*28	400.0	0.79	20.0	0.21	5.3	1.12	28.5

Dimensional tolerance(mm): OD: +0.3/-0.3 ID: +0.3/-0.3 Length:+0.5/-0.5

## BOBBIN CORE



Various bobbins can be assembled from the Hollow Cores and Disks shown on the following page. These bobbin assemblies provide an alternative shape for high current choke applications, which can tolerate some electro-magnetic radiation. This configuration can be especially effective for high power speaker crossover coils.

Typical assemblies are illustrated, this configuration is not available assembled. Order 2 Disks and one-Hollow core per set.

Disks Part No.	Hollow core Part No.	AL* nH/N <sup>2</sup>	OD		Length	
			in	mm	in	mm
KSR35*06	KSR19*35	98	1.38	35.0	1.77	45.0
KSR45*07	KSR25*35	130	1.77	45.0	1.85	47.0
KSR47*5*4.7	KSR25*6.3*25	47	1.85	47.0	1.38	35.0

Dimensional tolerance(mm): OD: +0.3/-0.3 Length:+1.0/-1.0

\*A<sub>L</sub> is approximate and for reference only

ADD: No.27 JinSha Road, ShaYao Village, ShiJie Town, DongGuan City, GuangDong Province, P.R.C.

TEL: +86-769-86638970 FAX: +86-769-86638971

E-mail: Sales@karson.com.tw

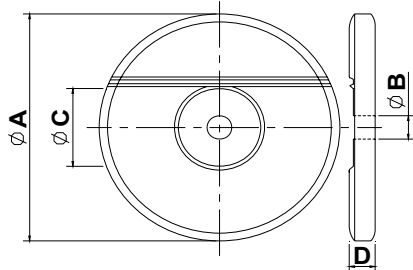


# KARSON ELECTRONICS CO., LTD.

## OTHER CORE

core outside and inside diameters listed are standard  
with variations in length possible upon request

Typical Part No.



KSR 47 \* 4.7 \* 5

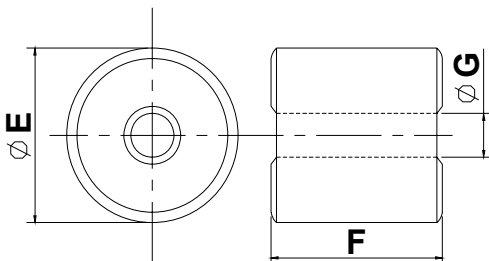
Karson Plain core \_\_\_\_\_  
Core OD in mm \_\_\_\_\_  
Core ID in mm \_\_\_\_\_  
Core Thickness in mm \_\_\_\_\_

KARSON Part No.	ΦA		ΦB		ΦC		D	
	in	mm	in	mm	in	mm	in	mm
KSR47*5*4.7	1.85	47.0	0.20	5.0	0.63	16.0	0.20	5.0
KSR35*06	1.38	35.0	0.00	0.0	0.77	19.5	0.24	6.0
KSR45*07	1.77	45.0	0.00	0.0	0.97	24.7	0.28	7.0

Dimensional tolerance(mm): ΦA:+0.3/-0.3 ΦB:+0.3/-0.3 ΦC:+0.3/-0.3 D:+0.5/-0.5

core outside and inside diameters listed are standard  
with variations in length possible upon request

Typical Part No.



KSR 25 \* 6.3 \* 25

Karson Plain core \_\_\_\_\_  
Core OD in mm \_\_\_\_\_  
Core ID in mm \_\_\_\_\_  
Core Thickness in mm \_\_\_\_\_

KARSON Part No.	ΦE		ΦG		F	
	in	mm	in	mm	in	mm
KSR25*6.3*25	0.98	25.0	0.25	6.3	0.98	25.0
KSR19*35	0.75	19.0	0.00	0.0	1.38	35.0
KSR25*35	0.98	25.0	0.00	0.0	1.38	35.0

Dimensional tolerance(mm): ΦE:+0.3/-0.3 ΦG:+0.3/-0.3 F:+0.5/-0.5

ADD: No.27 JinSha Road, ShaYao Village, ShiJie Town, DongGuan City, GuangDong Province, P.R.C.

TEL: +86-769-86638970 FAX: +86-769-86638971

E-mail: Sales@karson.com.tw